

NOTE: Further study needed:

This Samuel C. Holliman was born in 1754 Lancaster/S.C.????

Samuel Holliman in Edgecomb Co. N.C. built house in 1742 ???

★  
→ SAMUEL C. HOLLIMAN

The Gibson cemetery, locally referred to frequently as the Tory Cemetery is on the north side of state highway # 522 from Heath Springs to Stoneboro and is about a mile beyond the crossroads at the former J. Truesdale Stover home. The graves are across the road in front of Mr. Coke H. Bennett's childhood home about a quarter of a mile more or less.

In a recent search no trace of the original stones could be found. But Mr. Bennett recalled that as a boy he had gone one winter's day with an uncle, Mr. Minor C. Mackey, now deceased, to the cemetery and had helped to decipher the inscriptions while his uncle copied them. Accordingly he went to the home of Mr. Mackey's son, Walter F. Mackey, who now has possession of all his father's old papers. There after a search through an old trunk full of papers the inscriptions were found, just as Mr. Mackey had copied them with the notation that the copies had been made on February - 28, 1935. The inscriptions are given here just as copied by him on that day:

GIBSON John Cannerdy (Cannady?)/Gibson joined the Britttish Reg./ at age 16/ Died in a skirmish at Hanging Rock Aug. 6, 1780./

White, England.

GIBSON Thomas Victory (Vickory?) Gibson / age 24 /mortally wounded ... / and died August 12, 1780./

White, England.

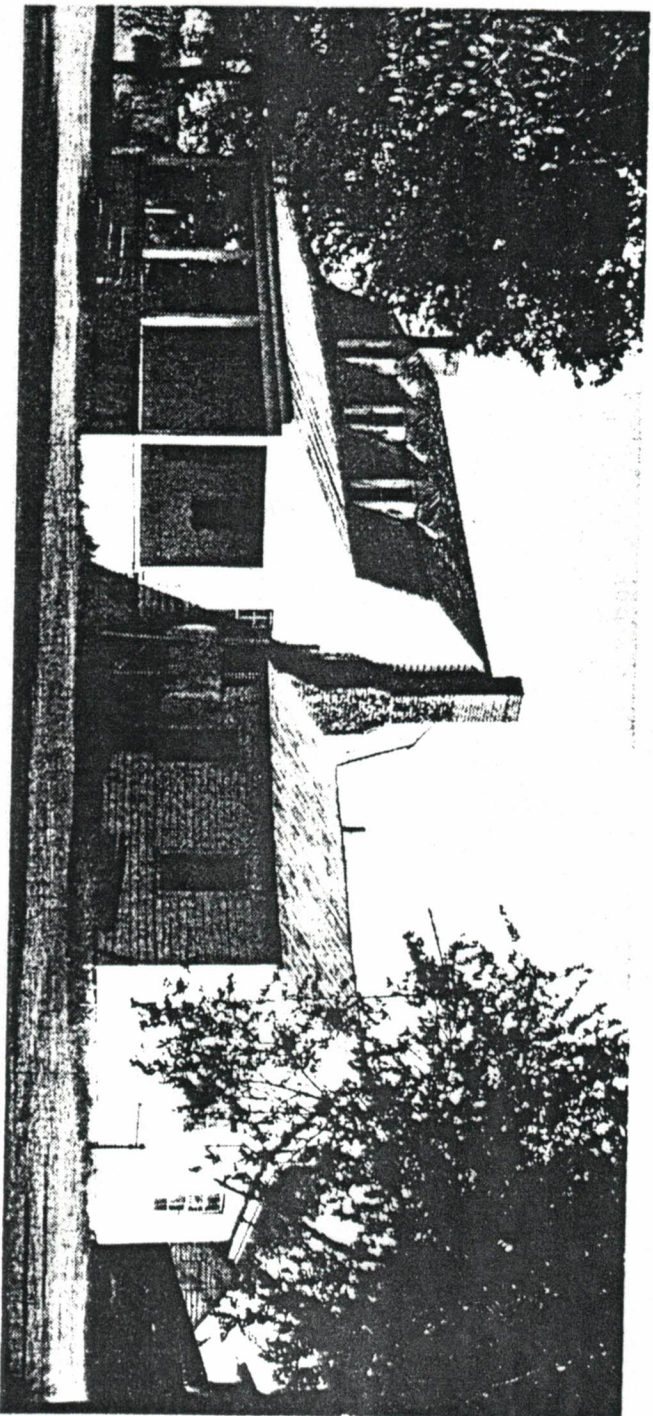
★  
→ HOLLIMAN Samuel C. Holliman / a Tory / born April 7, 1754 / departed this life 12th .... A.D. 1832 / age 78.

BEATTY Jas. M. Beatty / ... / in Belfast, Ireland ...

Library Source:

Inscriptions from Old Cemeteries, Lancaster County, S. C.  
Published by Lancaster County Historical Commission (S.C.)  
in 1974.

Birmingham Library - LC # So 929.5 INS.



Old Town Plantation is possibly the oldest house still standing in Edgecombe County. It was built in 1742 by Samuel Holliman, who sold it to Elisha Battle in 1747 for £50. The gambrel-roofed, frame story-and-a-half house is constructed with wide pegged boards; the foundations are laid in English bond and the chimneys in Flemish bond. This house was entered on the National Register of Historic Places in 1972. Photograph from the files of the Office of Archives and History.

Edgecombe houses often reflected the roughness of semifrontier life and the crudeness of homemade construction. Many were one or one-and-a-half room structures supplemented by lofts, sheds, or porches. Clapboard siding and shingled roofs completed the houses. Some of the humbler sort may have lived in log cabins, and the wealthier occasionally erected brick homes.<sup>4</sup> The wealthy in Edgecombe were merchants. 7